

# Speech, Language and Communication awareness training



**Zein Pereira**  
**Speech and Language Therapist**

# Aims

To develop awareness of:

- ✓ Speech, Language and Communication
- ✓ The Communication Chain
- ✓ What helps?
- ✓ How can you find out more?

# Impact of speech, language and communication



Almost everything we do involves speech, language and communication skills : **everyday tasks**, **having a conversation**, **sorting out a problem**, **having fun**, **socialising and making friends**, and for understanding and **controlling emotions and feelings**.

Speech, language and communication skills are crucial for reading and learning in school or college.

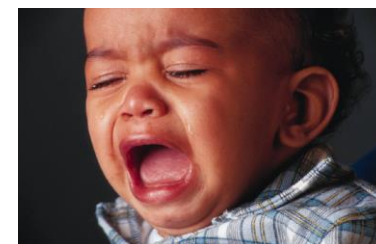


# Why might this be important?

- ▶ Children in your care may have SLCN in addition to emotional needs. UK wide studies show that approx 10% of all children have persisting SLCN. –you may be the one who identifies their needs.



- ▶ Some of the challenging behaviors that you observe may be associated with SLCN so using appropriate strategies may help.



Children may need support to access talking-based interventions and give their views.

# Why might this be important?

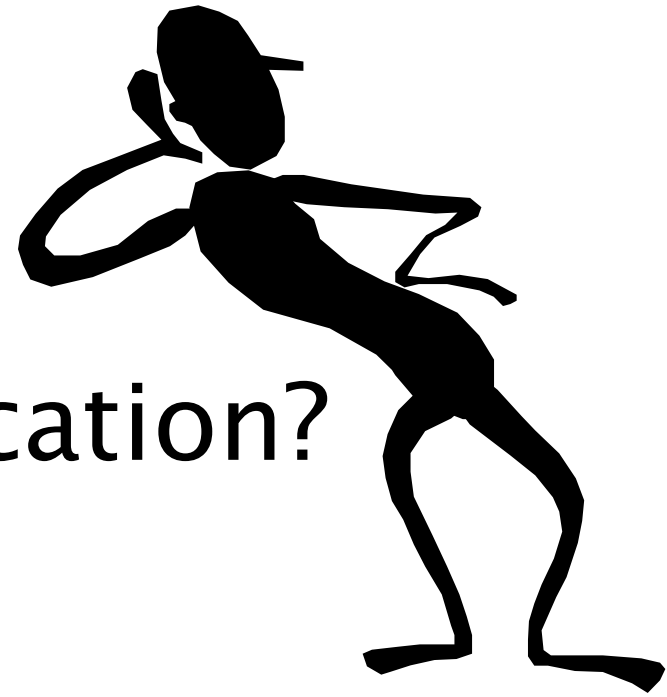
- Securely attached children have better language skills



- Good language skills help develop and maintain attachment!



Ref: Melanie Cross

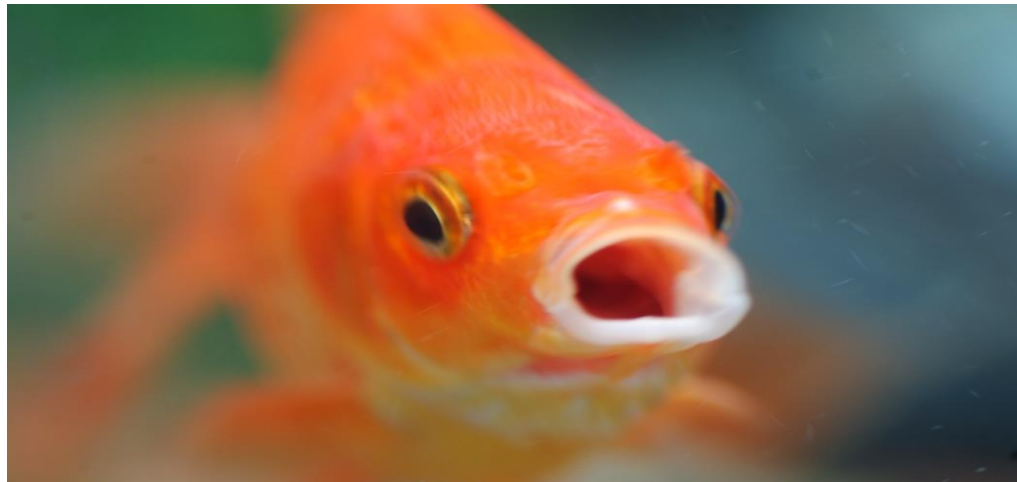


What is communication?



From a speech and language therapy perspective

# What is speech?

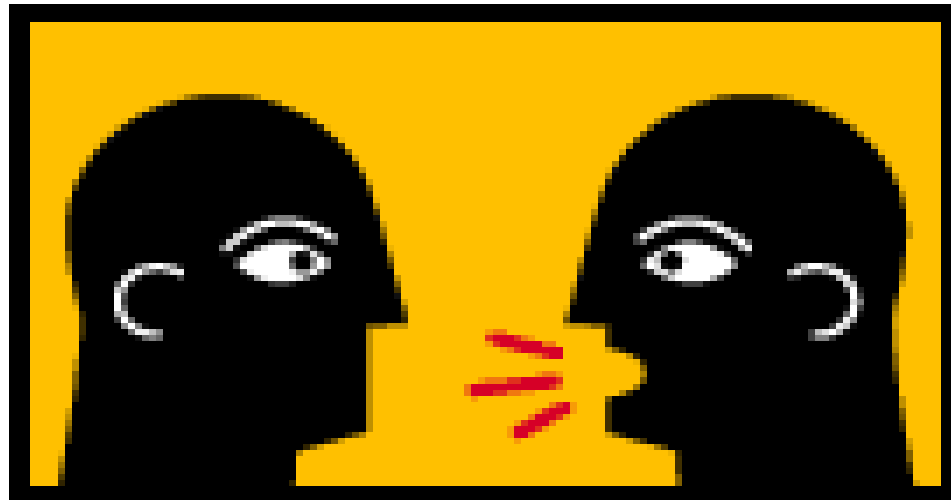


What are  
language skills?



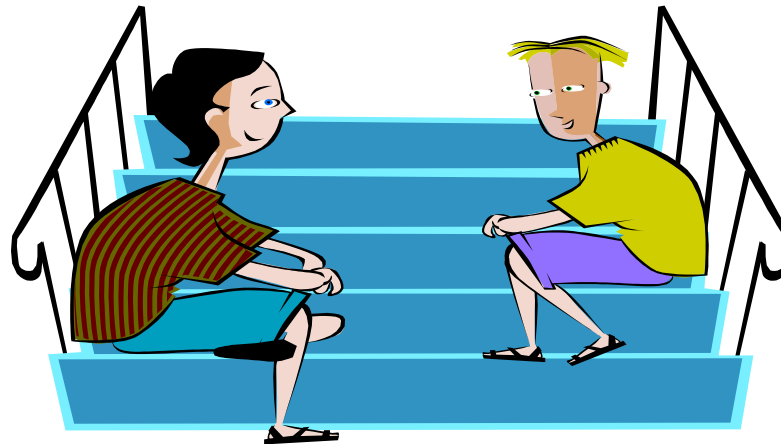


# What are communication skills?

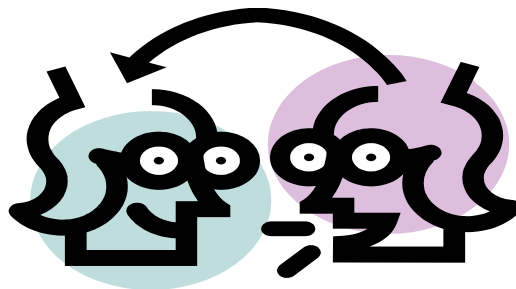


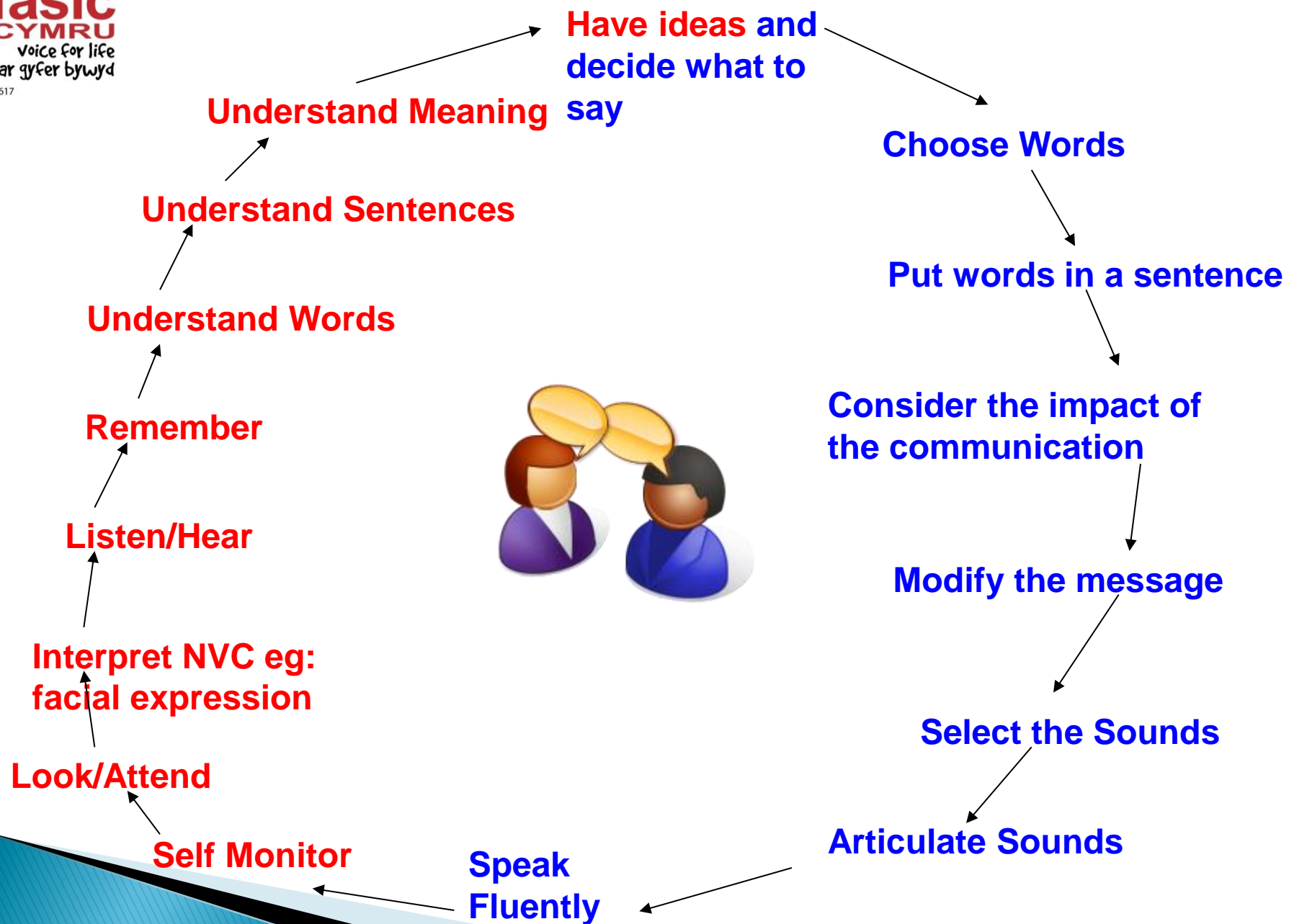
# Activity

Experience difficult communication

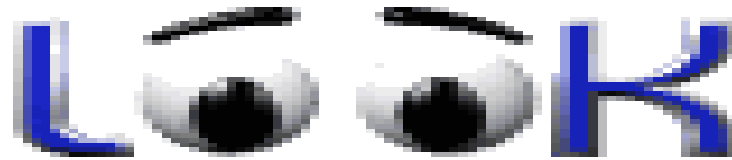


# What happens when we communicate?





How can you tell  
what to

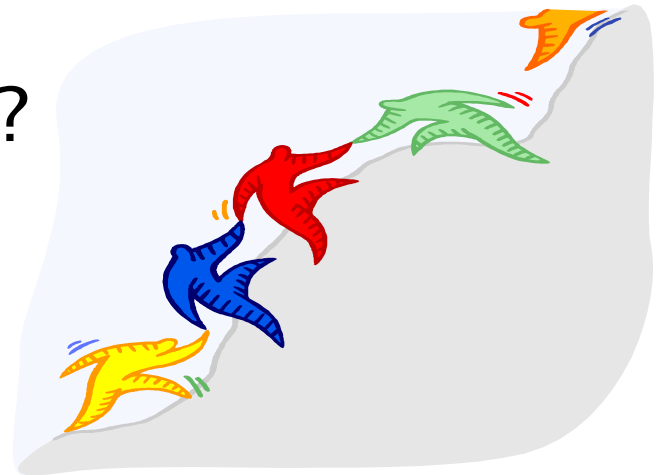


out for?



# What helps?

- ▶ What do you already do to support the communication chain?
- ▶ What could you try?
- ▶ What else might help?



# What helps

*Slightly* slow down your rate of speaking



**PAUSE 5-10 sec rule!**

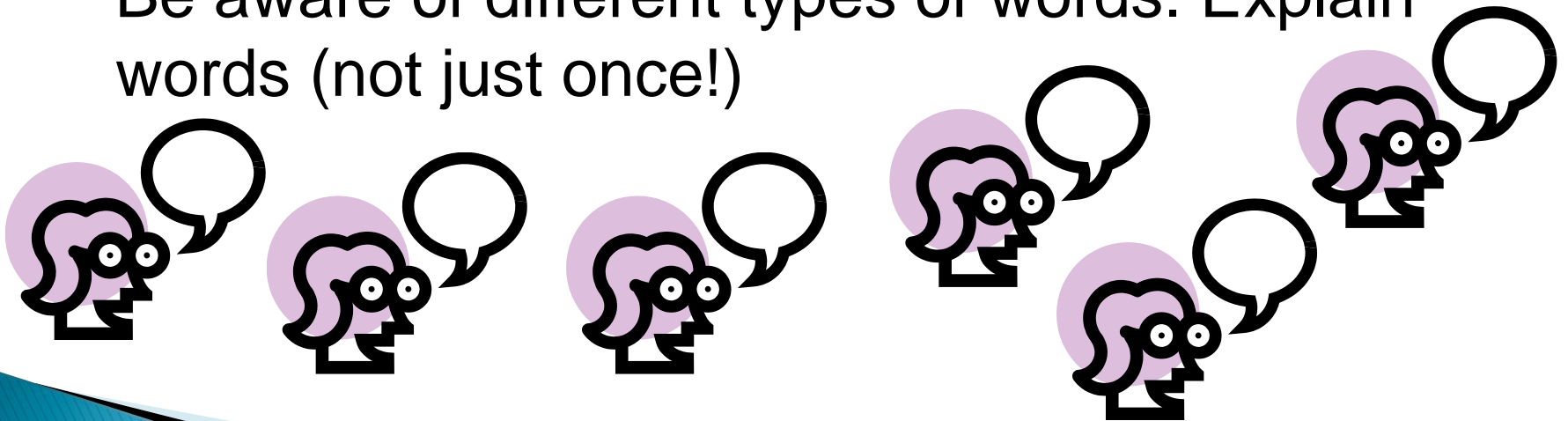


# What helps

Simplify and shorten,  
model examples.



Be aware of different types of words. Explain  
words (not just once!)





# What helps

Use something visual to support your message.



Check understanding.  
How do you do this?



Choose questions with care!



# How can you find out more?

[www.afasiccymru.org.uk](http://www.afasiccymru.org.uk)

A speech and language charity offering information, training and support for families, children and young people with SLCN.

[www.youtube.com/rallcampaign](http://www.youtube.com/rallcampaign)

Information about SLI presented by parents, children and young people, teachers, speech and language therapists.

[www.talkingpoint.org.uk](http://www.talkingpoint.org.uk)

Information and speech and language developmental checklists.

[www.thecommunicationtrust.org.uk](http://www.thecommunicationtrust.org.uk)

Research evidence and useful free publications eg: Universally Speaking, Lets talk about it, A Generation Adrift.



Charity No. 1045617

# THANK YOU!

## Zein Pereira

Independent Speech and Language Therapist  
[zein@yourheadspace.co.uk](mailto:zein@yourheadspace.co.uk)

Afasic Cymru Policy Officer  
[zein@afasiccymru.org.uk](mailto:zein@afasiccymru.org.uk)